

ART CLAYTM SILVER **Basic Instruction Guide**

Sun Pendant

Level: Beginner/ Intermediate

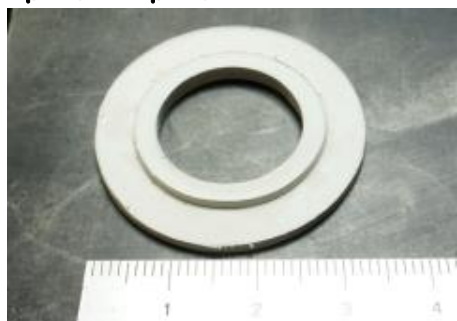


Completed piece

<Materials>

| | |
|-------------------------------------|------|
| Art Clay Silver 650/1200 Clay Type | 14g |
| Art Clay Silver 650/1200 Paste Type | some |
| Art Clay Gold Paste | some |

<Step by Step Guide>



1) Roll out the clay 1mm and 1.5mm thick, and cut out into the small and large circle shapes. Place the small one on the large one after moistening the surface while still in a soft state (See image).



2) Draw the design with a pencil after drying. File down along the design with a medium fine file and cut details with a craft knife.



3) Smooth the surface with a red sponge sanding pad. Make the outside edges thin.



4) Add texture with some Paste Type with a toothpick, dry and fire.



5) Put some Gold Paste on the flare parts, fire again, polish and finish.
Tip: Put some Gold Paste before polishing.

If you have any questions about this or other projects, please contact us at wada@artclay.co.jp