

ART CLAYTM SILVER Basic Instruction Guide #028

Making an Art Clay Silver Headphone jack accessory

Level: Beginner/ Intermediate



Completed piece

◀Material▶

Art Clay Silver 650/1200 Clay Type 5g	1pc
Art Clay Silver 650/1200 Syringe Type 5g	some
Headphone jack accessory / plug part	1pc
Blue Mix	some
Synthetic stone ϕ 3 (Example: Swarovski Zirconia)	1pc
Petit mold series (apple) as you like	1pc

[Note] Pick a charm design which will match and work well with your smart phone case.

◀ Step by Step Guide ▶

You can make double side charms by following this method :



1) Press approx. 3g of Art Clay 650 into a petit apple mold, and flatten the clay surface with a spatula.



2) Remove the clay when it is still soft.



3) Cut a leaf with a craft knife.



4) Bend the stem to the left (see the picture). After drying, smooth the surface with a red sponge sanding pad and finish half side of the charm.

Use the half side piece to make the extra mold :



The half charm piece will be the core to make another half side, using Blue Mix Mold



5) Attach some double sided adhesive tape to the back of the piece.



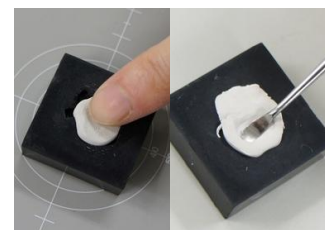
6) Attach the piece to a transparent plate (like CD case etc), and then make a mold with some Blue Mix.



7) Check from the backside through the plate. Cure without leaving any gaps.



8) Rub a small amount of food oil on the inside of the mold with a cotton swab.



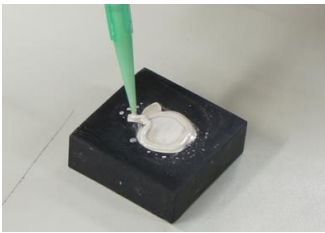
9) Make a ball with 2.5g of clay, press it into the mold, and make a hollow in the center
*Do not make too thin.



10) Flatten the surface with a spatula.



11) Press the clay into the Blue Mix mold for the back side. (picture: right back side, left back side).



12) Extrude syringe with green nozzle on the edge.



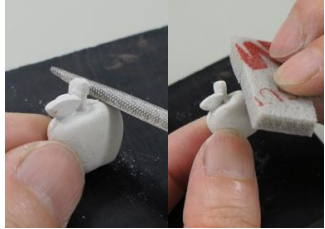
13) Remove the back side piece from the Blue Mix piece. Attach the back side piece to the front side piece.



14) Remove the front side piece. While you press it gently with your fingers, blend any extra syringe and dry.



15) If there are any gaps, dry for 2-3 mins., and fill with syringe. Blend any extra syringe with a moistened thin brush.



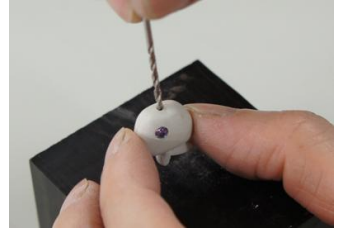
16) After drying, file down the joint with a medium fine file. Smooth the surface with a red sponge sanding pad.



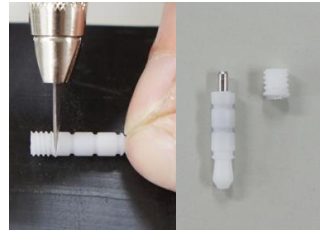
17) Make a depression for the synthetic stone with a ϕ 3 drill bit.



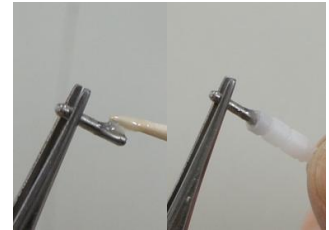
18) Embed the stone up to the girdle. *Stone will set well because of clay shrinkage



19) Make a shallow hole for the plug with a ϕ 1.5 drill bit, and fire. Make a mirror finish with a burnisher if you like.



20) Cut off the screw part of plug with a craft knife.



21) Take out the internal pin and glue it back in the plastic sleeve with some epoxy glue, and dry.



22) Apply a small amount of epoxy glue on the tip of the metal pin.



23) Immediately, attach the silver piece to the metal pin and finish. *Use a ϕ 1.5 drill bit if the hole was not big enough.

*Make sure fix plug part and Silver piece firmly with a plenty of epoxy glue.

[CAUTION!] : Please read following instructions for headphone jack plug.

- Insert well. Otherwise, it will detach easily.
- Although earphone jack is universal, some models may have special size and design. Please check dimensions before making.
- Cannot insert depending on the style of Smartphone or tablet protection case.

Cut the plastic screw part so that the stainless steel pin inside sticks in the Art Clay piece depends on the charm design and style of the Smartphone case. Especially consider for sharp bottom pieces like the heart shape etc. Mount your Art Clay top design on the pin with some epoxy glue.

- Be careful not to break or damage/drop the phone with piece inserted as the remainder may be hard to remove.
- Handle with care. Fragile assembly.
- Use only for decorative purposes. Components made in China.
- We are not responsible for damage due to use.
- Keep out of reach of children. For adult use.
- Use only for ages 11 and over. Use with parent supervision in the case of small children under the qualifying age.