

Pearl Brooch

Level: Basic/ Intermediate

<Materials>



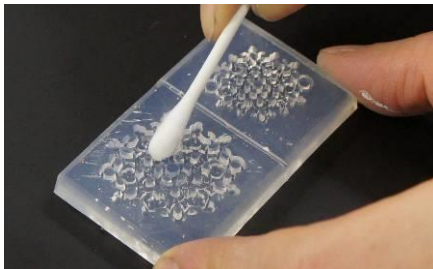
Completed piece

Art Clay Silver Clay Type	Approx. 5g
Japanese Akoya pearl half-drilled three quarter shape 7.5-8mm	3 pcs
Silver bezel B for marquise cut (8x4) without post (K-0044)	4 pcs
Silver bezel A for round cut 2mm (K-0027A)	2 pcs
Silver bezel A for round cut 4mm (K-0029A)	1 pc
Synthetic stones marquise cut 8x4	4 pcs
Synthetic stones round cut 2mm	2 pcs
Synthetic stones round cut 4mm	1 pc
Silver wire ϕ 1.0	30mm
Any findings (round jump ring, brooch findings etc.)	1 pc

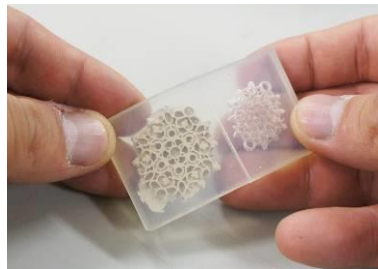
<TOOLS>

Art Clay Exclusive silicone findings mold – Turkish pattern (F-1141) or Greek pattern (F-1143) (The sample is used F-1141), spatula, cotton swab, cooking sheet, medium fine file, nipper, 2 flat pliers, stainless steel brush, ϕ 1.0mm drill bit, burnisher, tweezers

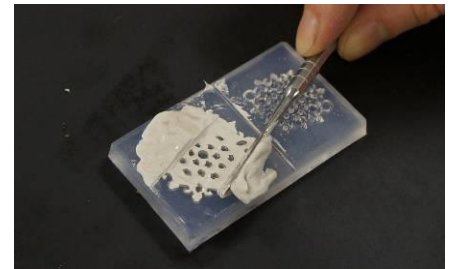
<Step by Step Guide>



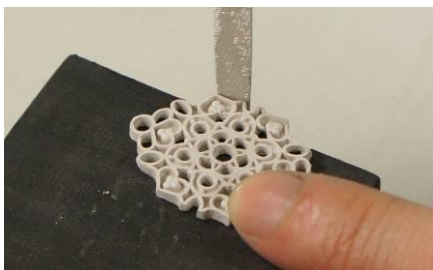
1. Paint a thin coat of food oil into the mold.



2. Knead the 5g of clay well and fill into the mold. Make sure it is filled in without any gaps.



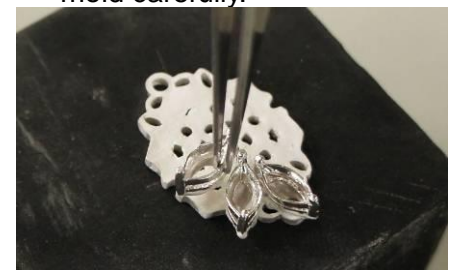
3. Scrape off any extra clay from the mould back. After drying completely, remove from the mold carefully.



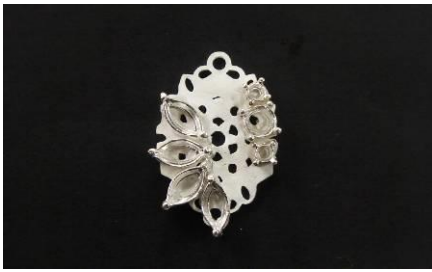
4. Shape with a medium fine file and fire at 800C/1472F in an electric kiln for 5 minutes.



5. Cut off the insert parts of the bezels with a nipper.



6. Attach the silver bezels with some Overlay Silver Paste on the back of the silver piece like shown in the image.



7. Layout example.



8. Cut the ϕ 0.1mm silver wire into 3 wires x 10mm. Bend the tip into an L-shape like in the image above.



9. Put plenty of Overlay Silver Paste on the tip of silver wire.



10. Attach the 3 wires on the space of the back. After drying completely, put the piece in a kiln and ramp up from room temperature to 800C/1472F.



11. Expand the hole sizes of three pearls with a ϕ 1.0mm drill bit.



12. Set the synthetic stones into the bezels with prongs and attach pearls into the silver wire with epoxy glue.



13. Set the medium round jump ring, and brooch findings or a chain, depending on your choice.